



183rd St and Pulaski Rd <Southbound>



Country Club Hills, IL RLR 3 Year Follow-Up Evaluation Report

Reference No: 016-45014
May 2022



John Galvin—Chief of Police
Department of Police

3700 W. 175th Place
Country Club Hills, IL 60478



708-798-3191
Fax: 708-798-1211

June 1, 2022

Thomas G. Gallenbach, P.E.
Area Permit Engineer
Illinois Department of Transportation
Bureau of Traffic
201 West Center Court
Schaumburg, Illinois 60196-1096

Re: RLR 3 Year Follow-Up Evaluation Report
183rd St and Pulaski Rd (Southbound)
City of Country Club Hills
Ref #: 016 -45014

Dear Mr. Gallenbach:

Please find enclosed a copy of the 3 Year RLR Follow-Up Evaluation Report for the intersection of 183rd St and Pulaski Rd, Country Club Hills, Illinois.

In this submittal, included are: RLR Camera Location, Implementation Date, System Manufacturer and Contractors, RLR Crash Data and Analysis, Traffic Volume History, Summary of Adjudication, and Summary section.

If you have any questions with regard to this submittal or require any additional information, please feel free to contact us at 708-798-3191, jgalvin@countryclubhills.org.

Best Regards,

John Galvin
Chief of Police
Country Club Hills Police

3 Year Evaluation Checklist

RLR FOLLOW-UP EVALUATION REPORT CHECKLIST

Reference Number:			Date:
Location:			Firm:
Yes	No	N/A	
<input type="checkbox"/>	<input type="checkbox"/>	<input type="checkbox"/>	Intersection location and RLR camera approaches identified
<input type="checkbox"/>	<input type="checkbox"/>	<input type="checkbox"/>	Date of RLR camera implementation
<input type="checkbox"/>	<input type="checkbox"/>	<input type="checkbox"/>	RLR camera system manufacturer and contractor name
<input type="checkbox"/>	<input type="checkbox"/>	<input type="checkbox"/>	Crash data including 3 years prior to RLR camera installation with post period crash data
<input type="checkbox"/>	<input type="checkbox"/>	<input type="checkbox"/>	Analysis of crash data
<input type="checkbox"/>	<input type="checkbox"/>	<input type="checkbox"/>	Signal timing changes
<input type="checkbox"/>	<input type="checkbox"/>	<input type="checkbox"/>	Traffic volumes before and after RLR cameras
<input type="checkbox"/>	<input type="checkbox"/>	<input type="checkbox"/>	Recommendations
<input type="checkbox"/>	<input type="checkbox"/>	<input type="checkbox"/>	Summary of adjudication experience and results

Table of Contents

1. RLR Camera Location, Live Date,
System Manufacturer and Contractors
2. RLR Crash Data and Analysis
3. Traffic Volume
4. Summary of Adjudication
5. Report Summary and Recommendation



1. RLR Camera Location, Live Date, System Manufacturer and Contractor

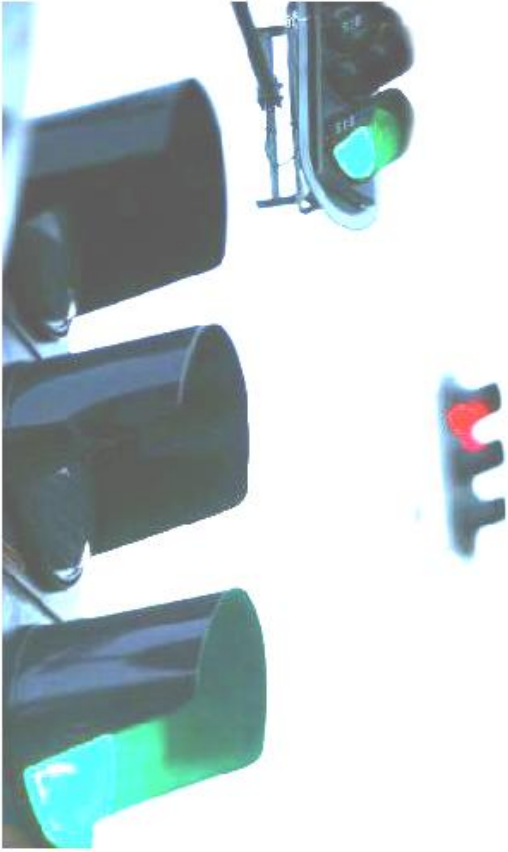
In 2010, the **City of Country Club Hills** received approval from the Illinois Department of Transportation (IDOT) to install a Red Light Running (RLR) camera on the **Southbound** approach at the intersection of **183rd St and Pulaski Rd.**

- Date on which the camera went live on the Southbound approach: **10/2010**
- Year in which the 1 Year Follow-Up Evaluation Report was submitted to the IDOT: **2012**
- Year in which the 3 Year Follow-Up Evaluation Report was submitted to the IDOT: **2015**
- Year in which the 2nd 3 Year Follow-Up Evaluation Report was submitted to the IDOT: **2020**

No changes were made to the traffic signal timing or any other settings pertaining to operation of traffic signals at this intersection following the camera installation.

Below are the RLR camera system manufacturer and contractor information.

<p>RLR Camera System Manufacturer</p> <p>SafeSpeed, LLC 150 North Wacker Drive Floor 8 Chicago, IL 60606</p> <p>Phone: (877) 237-2331 Fax: (877) 237-2302 Email: info@safespeedllc.com Web: safespeedllc.com</p> <p>Key Contact: Ryan Kim Phone: (312) 924-7248 Email: rkim@safespeedllc.com</p>	<p>Electrical Contractor</p> <p>Meade Electric Company 625 Willowbrook Center Parkway Willowbrook, IL 60527</p> <p>Phone: (708) 588-2500 Fax: (708) 588-2501 Email: info@meadeelectric.com Web: meadeelectric.com</p> <p>Key Contact: Mr. Michael Knutson Phone: (708) 588-2500 Email: mkk@meade100.com</p>
---	---



2. RLR Crash Data and Analysis

The table below shows a summary of motor vehicle crashes at the intersection of **183rd St and Pulaski Rd** over a span of 14 years*.

	Angle	Turning	Rear End	Pedalcyclist	Sideswipe	Parked Motor Vehicle	Fixed Object	Total
2007	1	7	5	0	0	0	0	13
2008	2	3	10	0	0	0	1	16
2009	2	3	3	0	1	0	1	10
2010	1	5	6	0	0	0	0	12
2011	0	1	4	0	0	0	1	6
2012	1	1	3	0	0	0	0	5
2013	1	5	3	0	0	0	0	9
2014	1	4	2	0	0	0	0	7
2015	0	1	1	0	0	0	0	2
2016	2	3	5	0	0	0	1	11
2017	3	2	8	0	2	0	0	15
2018	1	5	5	1	2	1	0	15
2019	1	4	6	0	1	0	0	12
2020	3	3	3	0	0	0	0	9

The data from 2007**-2009 shows the period prior to the installation of the RLR camera.

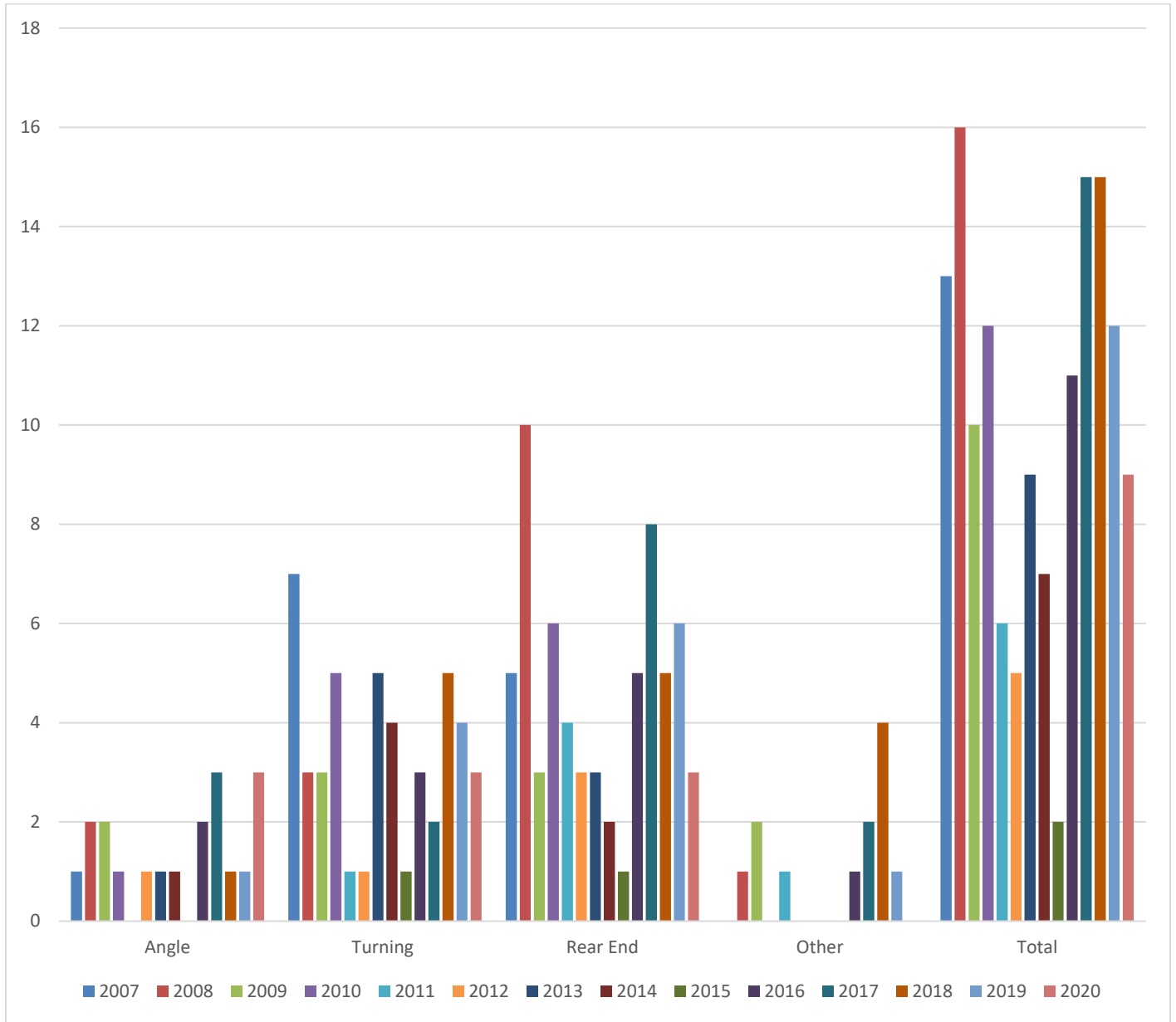
The data from 2010 shows the year in which the camera was installed.

The data from 2011-2020 shows the period following the installation.

* **DISCLAIMER:** The motor vehicle crash data referenced herein was provided by the Illinois Department of Transportation. Any conclusions drawn from analysis of the aforementioned data are the sole responsibility of the data recipient(s). Additionally, for coding years 2015 to present, the Bureau of Data Collection uses the exact latitude/longitude supplied by the investigating law enforcement agency to locate crashes. Therefore, location data may vary in previous years since data prior to 2015 was physically located by bureau personnel.

** Please note that the law regarding the crash reporting threshold for Property Damage Only crashes was amended effective January 1, 2009, to the following: When all drivers involved in a crash are insured, the amount of damage to the property of any one person that must be reported increased from \$500 to \$1,500. If any driver does not have insurance, the threshold remains at \$500. This change in law precludes comparison of 2009 and later Property Damage Only crashes and Total crashes with such crashes for previous years. The change did NOT affect the reporting of injury or fatal crashes.

The Chart below shows the trend of each crash type from 2007-2020.



	Year \ Type	Angle	Turning	Rear End	Other*	Total	Yearly Average
Before Installation	2007	1	7	5	0	13	13
	2008	2	3	10	1	16	
	2009	2	3	3	2	10	
	2010	1	5	6	0	12	
After Installation	2011	0	1	4	1	6	9.1
	2012	1	1	3	0	5	
	2013	1	5	3	0	9	
	2014	1	4	2	0	7	
	2015	0	1	1	0	2	
	2016	2	3	5	1	11	
	2017	3	2	8	2	15	
	2018	1	5	5	4	15	
	2019	1	4	6	1	12	
	2020	3	3	3	0	9	

* Other crashes include: Pedalcyclist, Parked Motor Vehicle, Sideswipe and Fixed Object.

From 2007-2008, prior to RLR camera installation, there were 39 total crashes; this averages out to 13 crashes a year.

From 2011-2020, post RLR camera installation, there were 91 total crashes; this averages out to 9.1 crashes per year - a 30% reduction of overall crashes in direct comparison with the time period aforementioned.

The following pages contain crash data summary pages from 2007-2020. The complete crash data can be obtained by contacting the IDOT via DOT.DTS.DataRequests@illinois.gov.

**IL Department of Transportation --- Div of Traffic Safety
Collision Diagram Report**

Database: CISReports
09/09/2008
Page 4 of 4

01/01/2007 to 12/31/2007

Route: 8096 From MileStation 4.13 to 4.13
County: COOK
Intersection Related

TOTAL	FATAL	INJURY	PROPERTY DAMAGE	TOTAL KILLED	TOTAL INJURED	A	B	C
13	0	4	9	0	4	0	2	2

<i>Type of Crash</i>	<i>Total</i>	<i>%</i>	<i>Day of Week</i>	<i>Total</i>	<i>%</i>	<i>Hour of Day</i>	<i>Total</i>	<i>%</i>	<i>Vehicle Type</i>	<i>Total</i>	<i>%</i>
Angle	1	7.69%	Monday	3	23.08%	8 AM	1	7.69%	Other	1	3.85%
Rear end	5	38.46%	Tuesday	2	15.38%	9 AM	2	15.38%	Passenger	19	73.08%
Turning	7	53.85%	Wednesday	1	7.69%	11 AM	1	7.69%	SUV	3	11.54%
			Thursday	1	7.69%	Noon	2	15.38%	Truck Single Unit	1	3.85%
			Friday	3	23.08%	1 PM	1	7.69%	Van/Mini-Van	2	7.69%
			Saturday	3	23.08%	2 PM	1	7.69%			
						6 PM	1	7.69%			
						7 PM	1	7.69%			
						8 PM	1	7.69%			
						10 PM	1	7.69%			
						11 PM	1	7.69%			
TOTAL:	13		TOTAL:	13		TOTAL:	13		TOTAL:	26	

<i>Weather Cond</i>	<i>Total</i>	<i>%</i>	<i>Light Cond</i>	<i>Total</i>	<i>%</i>	<i>Road Surface</i>	<i>Total</i>	<i>%</i>	<i>Vehicle DIR</i>	<i>Total</i>	<i>%</i>
Clear	10	76.92%	Darkness	1	7.69%	Dry	9	69.2	East	8	30.77%
Rain	2	15.38%	Darkness, Lighted Road	2	15.38%	Snow or Slush	2	15.3	North	9	34.62%
Snow	1	7.69%	Daylight	10	76.92%	Wet	2	15.3	South	3	11.54%
									Southwest	1	3.85%
									West	5	19.23%
TOTAL:	13		TOTAL:	13		TOTAL:	13		TOTAL:	26	

Collision Diagram

1/1/2008 to 12/31/2008

Crash Route: TS096 | From MileStation 4.13 to 4.13 | County : Cook | Intersection Related: Intersections | *See Notes at End of Report.

TOTAL CRASHES	FATAL CRASHES	A INJURY CRASHES	B INJURY CRASHES	C INJURY CRASHES	PROPERTY DAMAGE CRASHES	TOTAL KILLED	TOTAL INJURED	A INJURIES	B INJURIES	C INJURIES
16	0	1	2	1	12	0	7	1	2	4

Type of Crash	Total	%	Day of Wk	Total	%	Hour of Day	Total	%	Vehicle Type	Total	%
10-Turning	3	18.8%	Monday	3	18.8%	08 AM	3	18.8%	Other	2	5.7%
11-Rear end	10	62.5%	Tuesday	2	12.5%	1 PM	1	6.3%	Passenger	20	57.1%
15-Angle	2	12.5%	Thursday	3	18.8%	2 PM	1	6.3%	Sport utility vehicle (SUV)	8	22.9%
6-Fixed object	1	6.3%	Friday	4	25.0%	3 PM	2	12.5%	Van/mini van	5	14.3%
TOTAL:	16		Saturday	4	25.0%	4 PM	1	6.3%	TOTAL:	35	
			TOTAL:	16		5 PM	2	12.5%			
						6 PM	2	12.5%			
						7 PM	1	6.3%			
						9 PM	2	12.5%			
						11 PM	1	6.3%			
						TOTAL:	16				

Weather Cond	Total	%	Light Cond	Total	%	Road Surface	Total	%	DIRP	Total	%
Clear	11	68.8%	Darkness	1	6.3%	Dry	9	56.3%	East	8	22.9%
Rain	1	6.3%	Darkness/Lighted road	5	31.3%	Ice	1	6.3%	North	15	42.9%
Snow	4	25.0%	Daylight	10	62.5%	Snow or slush	3	18.8%	South	3	8.6%
TOTAL:	16		TOTAL:	16		Wet	3	18.8%	Southeast	3	8.6%
						TOTAL:	16		West	6	17.1%
									TOTAL:	35	

Collision Diagram

1/1/2009 to 12/31/2009

Crash Route: TS115 | From MileStation 3.59 to 3.59 | County : Cook | Intersection Related: Intersections | *See Notes at End of Report.

TOTAL CRASHES	FATAL CRASHES	A INJURY CRASHES	B INJURY CRASHES	C INJURY CRASHES	PROPERTY DAMAGE CRASHES	TOTAL KILLED	TOTAL INJURED	A INJURIES	B INJURIES	C INJURIES
10	0	0	2	2	6	0	8	0	6	2

Type of Crash	Total	%	Day of Wk	Total	%	Hour of Day	Total	%	Vehicle Type	Total	%
10-Turning	3	30.0%	Monday	2	20.0%	06 AM	1	10.0%	Bus up to 15 pass	1	5.3%
11-Rear end	3	30.0%	Tuesday	1	10.0%	07 AM	1	10.0%	Passenger	8	42.1%
12-Sideswipe same direction	1	10.0%	Wednesday	1	10.0%	08 AM	1	10.0%	Sport utility vehicle (SUV)	8	42.1%
15-Angle	2	20.0%	Thursday	1	10.0%	09 AM	1	10.0%	Tractor w/ semi-trailer	1	5.3%
6-Fixed object	1	10.0%	Friday	1	10.0%	11 AM	1	10.0%	Van/mini van	1	5.3%
TOTAL:	10		Saturday	4	40.0%	Noon	1	10.0%	TOTAL:	19	
			TOTAL:	10		1 PM	1	10.0%			
						8 PM	2	20.0%			
						10 PM	1	10.0%			
						TOTAL:	10				

Weather Cond	Total	%	Light Cond	Total	%	Road Surface	Total	%	DIRP	Total	%
Clear	7	70.0%	Darkness/Lighted road	2	20.0%	Dry	7	70.0%	East	7	36.8%
Rain	2	20.0%	Dawn	1	10.0%	Snow or slush	1	10.0%	North	6	31.6%
Snow	1	10.0%	Daylight	6	60.0%	Wet	2	20.0%	South	3	15.8%
TOTAL:	10		Dusk	1	10.0%	TOTAL:	10		Southeast	1	5.3%
			TOTAL:	10					West	2	10.5%
									TOTAL:	19	

Collision Diagram

1/1/2010 to 12/31/2010

Crash Route: TS115 | From MileStation 3.44 to 3.44 | County : Cook | Intersection Related: Intersections | *See Notes at End of Report.

TOTAL CRASHES	FATAL CRASHES	A INJURY CRASHES	B INJURY CRASHES	C INJURY CRASHES	PROPERTY DAMAGE CRASHES	TOTAL KILLED	TOTAL INJURED	A INJURIES	B INJURIES	C INJURIES
12	0	0	0	1	11	0	1	0	0	1

Type of Crash	Total	%	Day of Wk	Total	%	Hour of Day	Total	%	Vehicle Type	Total	%
10-Turning	5	41.7%	Monday	2	16.7%	08 AM	1	8.3%	Farm equipment	1	3.6%
11-Rear end	6	50.0%	Tuesday	2	16.7%	09 AM	1	8.3%	Passenger	14	50.0%
15-Angle	1	8.3%	Wednesday	3	25.0%	10 AM	4	33.3%	Pickup	2	7.1%
TOTAL:	12		Thursday	1	8.3%	1 PM	1	8.3%	Sport utility vehicle (SUV)	10	35.7%
			Friday	4	33.3%	3 PM	1	8.3%	Unknown/NA	1	3.6%
			TOTAL:	12		4 PM	2	16.7%	TOTAL:	28	
						7 PM	1	8.3%			
						10 PM	1	8.3%			
						TOTAL:	12				
Weather Cond	Total	%	Light Cond	Total	%	Road Surface	Total	%	DIRP	Total	%
Clear	12	100.0%	Darkness/Lighted road	2	16.7%	Dry	10	83.3%	East	6	21.4%
TOTAL:	12		Daylight	10	83.3%	Unknown	1	8.3%	North	9	32.1%
			TOTAL:	12		Wet	1	8.3%	Northeast	1	3.6%
						TOTAL:	12		Northwest	1	3.6%
									South	4	14.3%
									Southeast	2	7.1%
									West	5	17.9%
									TOTAL:	28	

Coordinate Collision Diagram Report

1/1/2011 to 12/31/2011

For XCoordinate 2967952.6128149 : YCoordinate 1790693.11500548 | Foot Tolerance : 30 | County : Cook | Intersection Related: Intersections | *See Notes at End of Report.

TOTAL CRASHES	FATAL CRASHES	A INJURY CRASHES	B INJURY CRASHES	C INJURY CRASHES	PROPERTY DAMAGE CRASHES	TOTAL KILLED	TOTAL INJURED	A INJURIES	B INJURIES	C INJURIES
6	0	0	0	0	6	0	0	0	0	0

Type of Crash	Total	%	Day of Wk	Total	%	Hour of Day	Total	%	Vehicle Type	Total	%
10-Turning	1	16.7%	Monday	1	16.7%	02 AM	1	16.7%	Passenger	8	66.7%
11-Rear end	4	66.7%	Thursday	1	16.7%	10 AM	1	16.7%	Pickup	2	16.7%
6-Fixed object	1	16.7%	Friday	2	33.3%	1 PM	1	16.7%	Sport utility vehicle (SUV)	2	16.7%
TOTAL:	6		Saturday	1	16.7%	4 PM	1	16.7%	TOTAL:	12	
			Sunday	1	16.7%	9 PM	1	16.7%			
			TOTAL:	6		11 PM	1	16.7%			
						TOTAL:	6				
Weather Cond	Total	%	Light Cond	Total	%	Road Surface	Total	%	DIRP	Total	%
Clear	6	100.0%	Darkness/Lighted road	3	50.0%	Dry	5	83.3%	East	7	58.3%
TOTAL:	6		Daylight	3	50.0%	Ice	1	16.7%	South	4	33.3%
			TOTAL:	6		TOTAL:	6		West	1	8.3%
									TOTAL:	12	



Coordinate Collision Diagram Report

1/1/2012 to 12/31/2012

For XCoordinate 2967952.40430242 : YCoordinate 1790694.12504668 | Foot Tolerance : 30 | County : Cook | Intersection Related: Intersections | *See Notes at End of Report.

TOTAL CRASHES	FATAL CRASHES	A INJURY CRASHES	B INJURY CRASHES	C INJURY CRASHES	PROPERTY DAMAGE CRASHES	TOTAL KILLED	TOTAL INJURED	A INJURIES	B INJURIES	C INJURIES
5	0	0	0	1	4	0	1	0	0	1

Type of Crash	Total	%	Day of Wk	Total	%	Hour of Day	Total	%	Vehicle Type	Total	%
Angle	1	20.0%	Monday	1	20.0%	06 AM	1	20.0%	Bus Up to 15 Passengers	1	10.0%
Rear End	3	60.0%	Thursday	2	40.0%	11 AM	2	40.0%	Passenger	6	60.0%
Turning	1	20.0%	Friday	1	20.0%	5 PM	1	20.0%	Pickup	1	10.0%
TOTAL:	5		Saturday	1	20.0%	6 PM	1	20.0%	SUV	2	20.0%
			TOTAL:	5		TOTAL:	5		TOTAL:	10	

Weather Cond	Total	%	Light Cond	Total	%	Road Surface	Total	%	DIRP	Total	%
Clear	3	60.0%	Daylight	5	100.0%	Dry	3	60.0%	East	2	20.0%
Rain	1	20.0%	TOTAL:	5		Snow or Slush	1	20.0%	North	3	30.0%
Snow	1	20.0%			Wet	1	20.0%	South	2	20.0%	
TOTAL:	5				TOTAL:	5		West	3	30.0%	
								TOTAL:	10		

Coordinate Collision Diagram Report

1/1/2013 to 12/31/2013

For XCoordinate 2967952.54143348 : YCoordinate 1790693.36069825 | Foot Tolerance : 30 | County : Cook | Intersection Related: Intersections | *See Notes at End of Report.

TOTAL CRASHES	FATAL CRASHES	A INJURY CRASHES	B INJURY CRASHES	C INJURY CRASHES	PROPERTY DAMAGE CRASHES	TOTAL KILLED	TOTAL INJURED	A INJURIES	B INJURIES	C INJURIES
<u>9</u>	<u>0</u>	<u>0</u>	<u>2</u>	<u>3</u>	<u>4</u>	<u>0</u>	<u>9</u>	<u>0</u>	<u>4</u>	<u>5</u>

Type of Crash	Total	%	Day of Wk	Total	%	Hour of Day	Total	%	Vehicle Type	Total	%
Angle	1	11.1%	Monday	1	11.1%	02 AM	1	11.1%	Passenger	14	73.7%
Rear End	3	33.3%	Wednesday	1	11.1%	04 AM	1	11.1%	SUV	5	26.3%
Turning	5	55.6%	Thursday	1	11.1%	08 AM	1	11.1%	TOTAL:	19	
TOTAL:	9		Friday	1	11.1%	10 AM	1	11.1%			
			Saturday	4	44.4%	1 PM	1	11.1%			
			Sunday	1	11.1%	3 PM	1	11.1%			
			TOTAL:	9		4 PM	1	11.1%			
						10 PM	2	22.2%			
						TOTAL:	9				

Weather Cond	Total	%	Light Cond	Total	%	Road Surface	Total	%	DIRP	Total	%
Clear	9	100.0%	Darkness	2	22.2%	Dry	8	88.9%	East	3	15.8%
TOTAL:	9		Darkness/ Lighted Road	3	33.3%	Snow or Slush	1	11.1%	North	4	21.1%
			Daylight	4	44.4%	TOTAL:	9		South	4	21.1%
			TOTAL:	9					Southeast	2	10.5%
									Southwest	1	5.3%
									West	5	26.3%
									TOTAL:	19	

Coordinate Collision Diagram Summary

1/1/2014 to 12/31/2014

For XCoordinate 2967952.61031542 : YCoordinate 1790692.97676042 | Foot Tolerance : 30 | County : Cook | Intersection Related: Intersections | *See Notes at End of Report.

TOTAL CRASHES	FATAL CRASHES	A INJURY CRASHES	B INJURY CRASHES	C INJURY CRASHES	PROPERTY DAMAGE CRASHES	TOTAL KILLED	TOTAL INJURED	A INJURIES	B INJURIES	C INJURIES
7	0	0	1	1	5	0	2	0	1	1

Type of Crash	Total	%	Day of Wk	Total	%	Hour of Day	Total	%	Vehicle Type	Total	%
Angle	1	14.3%	Monday	1	14.3%	Midnight	1	14.3%	Passenger	7	46.7%
Rear End	2	28.6%	Tuesday	1	14.3%	03 AM	1	14.3%	Pickup	2	13.3%
Turning	4	57.1%	Friday	3	42.9%	04 AM	1	14.3%	SUV	6	40.0%
TOTAL:	7		Saturday	2	28.6%	Noon	1	14.3%	TOTAL:	15	
			TOTAL:	7		6 PM	1	14.3%			
						7 PM	2	28.6%			
						TOTAL:	7				
Weather Cond	Total	%	Light Cond	Total	%	Road Surface	Total	%	DIRP	Total	%
Clear	5	71.4%	Darkness/ Lighted Road	5	71.4%	Dry	4	57.1%	East	6	40.0%
Rain	2	28.6%	Daylight	1	14.3%	Wet	3	42.9%	North	3	20.0%
TOTAL:	7		Dusk	1	14.3%	TOTAL:	7		South	4	26.7%
			TOTAL:	7					Southeast	1	6.7%
									West	1	6.7%
									TOTAL:	15	

Notes

Calendar data selections include data based on the date of the crash. Year selections include data based on the Statistical year in which the crash was processed

Coordinate Collision Diagram Report

1/1/2015 to 12/31/2015

For XCoordinate 2967952.610315 : YCoordinate 1790692.97676 | Foot Tolerance : 250 | County : Cook | Intersection Related: Intersections | *See Notes at End of Report.

TOTAL CRASHES	FATAL CRASHES	A INJURY CRASHES	B INJURY CRASHES	C INJURY CRASHES	PROPERTY DAMAGE CRASHES	TOTAL KILLED	TOTAL INJURED	A INJURIES	B INJURIES	C INJURIES
2	0	0	0	1	1	0	1	0	0	1

Type of Crash	Total	%	Day of Wk	Total	%	Hour of Day	Total	%	Vehicle Type	Total	%
Rear End	1	50.0%	Tuesday	1	50.0%	09 AM	1	50.0%	Bus Up to 15 Passengers	1	20.0%
Turning	1	50.0%	Wednesday	1	50.0%	9 PM	1	50.0%	Passenger	1	20.0%
TOTAL:	2		TOTAL:	2		TOTAL:	2		SUV	1	20.0%
									Unknown	1	20.0%
									Van/Mini-Van	1	20.0%
									TOTAL:	5	
Weather Cond	Total	%	Light Cond	Total	%	Road Surface	Total	%	DIRP	Total	%
Clear	2	100.0%	Darkness, Lighted Road	1	50.0%	Dry	2	100.0%	East	1	20.0%
TOTAL:	2		Daylight	1	50.0%	TOTAL:	2		North	3	60.0%
			TOTAL:	2					Southeast	1	20.0%
									TOTAL:	5	

Coordinate Collision Diagram Report

1/1/2016 to 12/31/2016

For XCoordinate 2967952.610315 : YCoordinate 1790692.97676 | Foot Tolerance : 250 | County : Cook | Intersection Related: Intersections | *See Notes at End of Report.

TOTAL CRASHES	FATAL CRASHES	A INJURY CRASHES	B INJURY CRASHES	C INJURY CRASHES	PROPERTY DAMAGE CRASHES	TOTAL KILLED	TOTAL INJURED	A INJURIES	B INJURIES	C INJURIES
<u>11</u>	<u>0</u>	<u>0</u>	<u>2</u>	<u>0</u>	<u>9</u>	<u>0</u>	<u>2</u>	<u>0</u>	<u>2</u>	<u>0</u>

Type of Crash	Total	%	Day of Wk	Total	%	Hour of Day	Total	%	Vehicle Type	Total	%
Angle	2	18.2%	Monday	2	18.2%	03 AM	1	9.1%	Passenger	17	81.0%
Fixed Object	1	9.1%	Wednesday	2	18.2%	08 AM	1	9.1%	SUV	3	14.3%
Rear End	5	45.5%	Thursday	1	9.1%	09 AM	1	9.1%	Van/Mini-Van	1	4.8%
Turning	3	27.3%	Friday	3	27.3%	Noon	1	9.1%	TOTAL:	21	
TOTAL:	11		Saturday	3	27.3%	2 PM	1	9.1%			
			TOTAL:	11		3 PM	1	9.1%			
						4 PM	1	9.1%			
						8 PM	2	18.2%			
						9 PM	1	9.1%			
						11 PM	1	9.1%			
						TOTAL:	11				

Weather Cond	Total	%	Light Cond	Total	%	Road Surface	Total	%	DIRP	Total	%
Clear	7	63.6%	Darkness, Lighted Road	5	45.5%	Dry	7	63.6%	East	5	23.8%
Cloudy/Overcast	1	9.1%	Daylight	6	54.5%	Wet	4	36.4%	North	5	23.8%
Rain	2	18.2%	TOTAL:	11		TOTAL:	11		South	4	19.0%
Snow	1	9.1%						Southeast	2	9.5%	
TOTAL:	11							West	5	23.8%	
								TOTAL:	21		

Coordinate Collision Diagram Report

1/1/2017 to 12/31/2017

For XCoordinate 2967952.610315 : YCoordinate 1790692.97676 | Foot Tolerance : 250 | County : Cook | Intersection Related: Intersections | *See Notes at End of Report.

TOTAL CRASHES	FATAL CRASHES	A INJURY CRASHES	B INJURY CRASHES	C INJURY CRASHES	PROPERTY DAMAGE CRASHES	TOTAL KILLED	TOTAL INJURED	A INJURIES	B INJURIES	C INJURIES
<u>15</u>	<u>0</u>	<u>1</u>	<u>2</u>	<u>2</u>	<u>10</u>	<u>0</u>	<u>9</u>	<u>3</u>	<u>2</u>	<u>4</u>

Type of Crash	Total	%	Day of Wk	Total	%	Hour of Day	Total	%	Vehicle Type	Total	%
Angle	3	20.0%	Monday	1	6.7%	10 AM	2	13.3%	Bus Up to 15 Passengers	1	3.1%
Rear End	8	53.3%	Tuesday	3	20.0%	Noon	1	6.7%	Passenger	21	65.6%
Sideswipe Opposite Direction	1	6.7%	Wednesday	4	26.7%	2 PM	1	6.7%	SUV	8	25.0%
Sideswipe Same Direction	1	6.7%	Thursday	1	6.7%	3 PM	2	13.3%	Truck Single Unit	1	3.1%
Turning	2	13.3%	Friday	1	6.7%	5 PM	1	6.7%	Van/Mini-Van	1	3.1%
TOTAL:	15		Saturday	5	33.3%	8 PM	3	20.0%	TOTAL:	32	
			TOTAL:	15		9 PM	2	13.3%			
						10 PM	2	13.3%			
						11 PM	1	6.7%			
						TOTAL:	15				
Weather Cond	Total	%	Light Cond	Total	%	Road Surface	Total	%	DIRP	Total	%
Clear	10	66.7%	Darkness	1	6.7%	Dry	10	66.7%	East	14	43.8%
Rain	5	33.3%	Darkness, Lighted Road	8	53.3%	Wet	5	33.3%	North	6	18.8%
TOTAL:	15		Daylight	6	40.0%	TOTAL:	15		Northeast	1	3.1%
			TOTAL:	15					Northwest	1	3.1%
									South	5	15.6%
									West	5	15.6%
								TOTAL:	32		

Coordinate Collision Diagram Report

1/1/2018 to 12/31/2018

For XCoordinate 2967952.642 : YCoordinate 1790692.579 | Foot Tolerance : 250 | County : Cook | Intersection Related: Intersections | *See Notes at End of Report.

TOTAL CRASHES	FATAL CRASHES	A INJURY CRASHES	B INJURY CRASHES	C INJURY CRASHES	PROPERTY DAMAGE CRASHES	TOTAL KILLED	TOTAL INJURED	A INJURIES	B INJURIES	C INJURIES
<u>15</u>	<u>0</u>	<u>0</u>	<u>3</u>	<u>2</u>	<u>10</u>	<u>0</u>	<u>7</u>	<u>0</u>	<u>5</u>	<u>2</u>

Type of Crash	Total	%	Day of Wk	Total	%	Hour of Day	Total	%	Vehicle Type	Total	%
Angle	1	6.7%	Monday	2	13.3%	10 AM	1	6.7%	Passenger	22	73.3%
Front to Rear	5	33.3%	Tuesday	4	26.7%	11 AM	1	6.7%	SUV	8	26.7%
Parked Motor Vehicle	1	6.7%	Wednesday	1	6.7%	Noon	2	13.3%	TOTAL:	30	
Pedalcyclist	1	6.7%	Thursday	2	13.3%	1 PM	1	6.7%			
Sideswipe Same Direction	2	13.3%	Friday	4	26.7%	2 PM	1	6.7%			
Turning	5	33.3%	Saturday	1	6.7%	3 PM	1	6.7%			
TOTAL:	15		Sunday	1	6.7%	4 PM	1	6.7%			
			TOTAL:	15		5 PM	1	6.7%			
						6 PM	2	13.3%			
						7 PM	1	6.7%			
						9 PM	2	13.3%			
						10 PM	1	6.7%			
						TOTAL:	15				

Weather Cond	Total	%	Light Cond	Total	%	Road Surface	Total	%	DIRP	Total	%
Clear	9	60.0%	Darkness	2	13.3%	Dry	10	66.7%	East	7	23.3%
Cloudy/Overcast	2	13.3%	Darkness, Lighted Road	2	13.3%	Snow or Slush	1	6.7%	North	7	23.3%
Rain	3	20.0%	Daylight	10	66.7%	Wet	4	26.7%	Northeast	1	3.3%
						TOTAL:	15		South	9	30.0%

Coordinate Collision Diagram Report

1/1/2019 to 12/31/2019

For XCoordinate 2967952.642 : YCoordinate 1790692.579 | Foot Tolerance : 250 | County : Cook | Intersection Related: Intersections | *See Notes at End of Report.

TOTAL CRASHES	FATAL CRASHES	A INJURY CRASHES	B INJURY CRASHES	C INJURY CRASHES	PROPERTY DAMAGE CRASHES	TOTAL KILLED	TOTAL INJURED	A INJURIES	B INJURIES	C INJURIES
<u>12</u>	<u>0</u>	<u>1</u>	<u>0</u>	<u>2</u>	<u>9</u>	<u>0</u>	<u>3</u>	<u>1</u>	<u>0</u>	<u>2</u>

Type of Crash	Total	%	Day of Wk	Total	%	Hour of Day	Total	%	Vehicle Type	Total	%
Angle	1	8.3%	Monday	1	8.3%	08 AM	1	8.3%	Passenger	15	57.7%
Front to Rear	6	50.0%	Tuesday	2	16.7%	09 AM	1	8.3%	Pickup	2	7.7%
Sideswipe Same Direction	1	8.3%	Wednesday	1	8.3%	10 AM	2	16.7%	SUV	5	19.2%
Turning	4	33.3%	Thursday	2	16.7%	1 PM	1	8.3%	Unknown	1	3.8%
TOTAL:	12		Friday	3	25.0%	2 PM	1	8.3%	Van/Mini-Van	3	11.5%
			Saturday	3	25.0%	3 PM	1	8.3%	TOTAL:	26	
			TOTAL:	12		4 PM	1	8.3%			
						7 PM	1	8.3%			
						9 PM	3	25.0%			
						TOTAL:	12				
Weather Cond	Total	%	Light Cond	Total	%	Road Surface	Total	%	DIRP	Total	%
Clear	9	75.0%	Darkness, Lighted Road	5	41.7%	Dry	8	66.7%	East	10	38.5%
Cloudy/Overcast	2	16.7%	Daylight	7	58.3%	Snow or Slush	2	16.7%	North	2	7.7%
Rain	1	8.3%	TOTAL:	12		Unknown	1	8.3%	Northeast	1	3.8%
TOTAL:	12					Wet	1	8.3%	Northwest	1	3.8%
						TOTAL:	12		South	3	11.5%
									Southeast	1	3.8%
									Southwest	1	3.8%

Coordinate Collision Diagram Report

1/1/2020 to 12/31/2020

For XCoordinate 2967952.642 : YCoordinate 1790692.579 | Foot Tolerance : 250 | County : Cook | Intersection Related: Intersections | *See Notes at End of Report.

TOTAL CRASHES	FATAL CRASHES	A INJURY CRASHES	B INJURY CRASHES	C INJURY CRASHES	PROPERTY DAMAGE CRASHES	TOTAL KILLED	TOTAL INJURED	A INJURIES	B INJURIES	C INJURIES
9	0	0	1	1	7	0	3	0	1	2

Type of Crash	Total	%	Day of Wk	Total	%	Hour of Day	Total	%	Vehicle Type	Total	%
Angle	3	33.3%	Monday	4	44.4%	09 AM	1	11.1%	Passenger	10	55.6%
Front to Rear	3	33.3%	Thursday	2	22.2%	10 AM	1	11.1%	Pickup	2	11.1%
Turning	3	33.3%	Friday	3	33.3%	11 AM	1	11.1%	SUV	5	27.8%
TOTAL:	9		TOTAL:	9		2 PM	2	22.2%	Van/Mini-Van	1	5.6%
						6 PM	1	11.1%	TOTAL:	18	
						7 PM	1	11.1%			
						8 PM	1	11.1%			
						11 PM	1	11.1%			
						TOTAL:	9				
Weather Cond	Total	%	Light Cond	Total	%	Road Surface	Total	%	DIRP	Total	%
Clear	8	88.9%	Darkness, Lighted Road	4	44.4%	Dry	9	100.0%	East	3	16.7%
Cloudy/Overcast	1	11.1%	Daylight	5	55.6%	TOTAL:	9		North	5	27.8%
TOTAL:	9		TOTAL:	9					Northwest	1	5.6%
									South	3	16.7%
									Southeast	1	5.6%
									West	5	27.8%
									TOTAL:	18	



3. Traffic Volume

The table below shows a summary of the Average Daily Traffic Count (ADTC) at the intersection of **183rd St and Pulaski Rd** over a span of 13 years.

The history of available ADTC on each approach was obtained from the IDOT website per the RLR Guideline document published by the IDOT and recorded in **bold** below.

(<http://www.gettingaroundillinois.com/gai.htm?mt=aadt>)

The data from 2008-2009 shows the period prior to the installation of the RLR camera.

The data from 2010 shows the year in which the camera was installed.

The data from 2011-2020 shows the period following the installation.

	Direction	Eastbound	Westbound	Northbound	Southbound	Combined	Combined Avg
	Year						
Before Installation	2008	16,500	16,500	12,700	17,100	62,800	62,800
	2009	16,500	16,500	12,700	17,100	62,800	
	2010	18,700	18,700	12,200	15,900	65,500	
After Installation	2011	18,700	18,700	12,200	15,900	65,500	58,580
	2012	18,700	18,700	12,200	15,900	65,500	
	2013	18,700	18,700	12,200	15,900	65,500	
	2014	15,600	15,600	13,600	8,950	53,750	
	2015	15,600	15,600	13,600	8,950	53,750	
	2016	15,600	15,600	13,600	8,950	53,750	
	2017	15,600	15,600	13,600	8,950	53,750	
	2018	14,800	14,800	13,800	14,700	58,100	
	2019	14,800	14,800	13,800	14,700	58,100	
	2020	14,800	14,800	13,800	14,700	58,100	

From 2008-2009, prior to RLR camera installation, the combined average of ADTC was 62,800.

From 2011-2020, post RLR camera installation, the combined average of ADTC was 58,580 – a reduction of 6.72%.

The following pages show the complete ADTC data from 2008-2020 obtained from the IDOT’s website.

The traffic numbers below were obtained from the IDOT website during the preparation of past reports and now per the RLR Guideline document published by the IDOT. Only ADTC values were available, peak numbers were not provided.

2008

The traffic numbers below were obtained from the IDOT website per the RLR Guideline document published by the IDOT. Only ADTC values were available, peak numbers were not provided.

183rd St ADTC

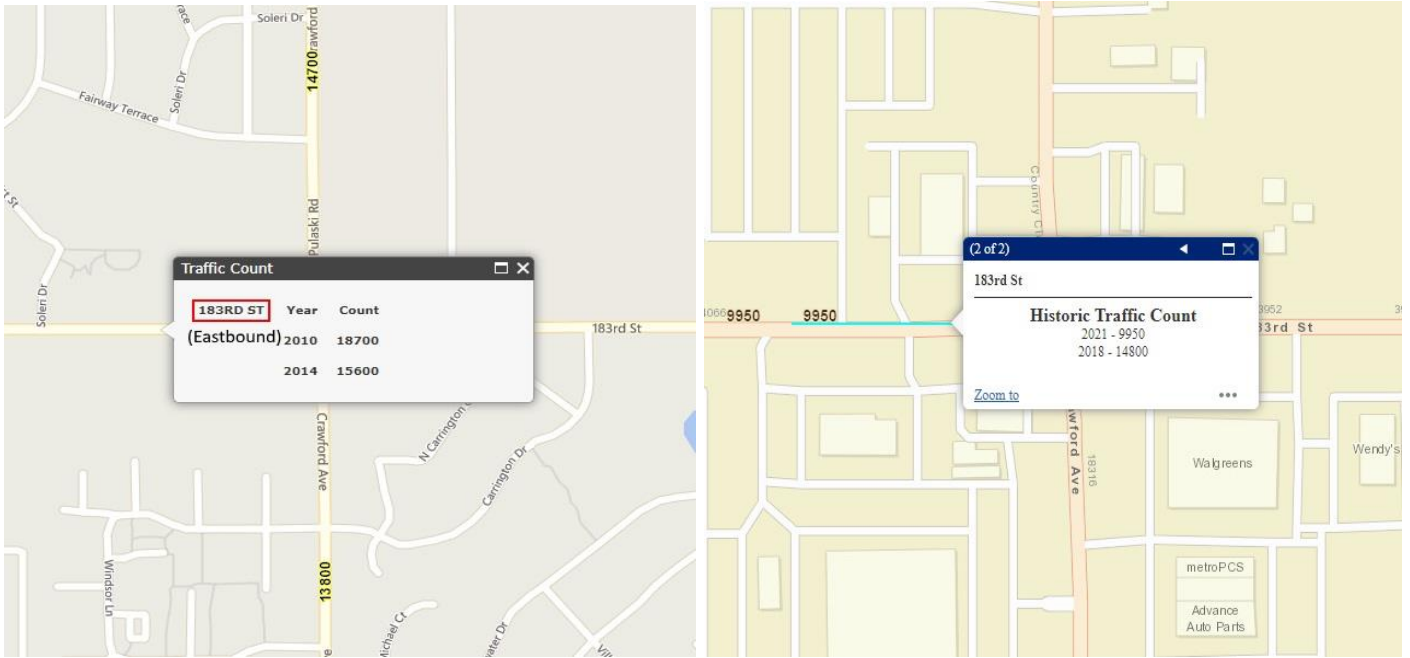
- Eastbound: 16,500
- Westbound: 16,500

Pulaski Rd (Crawford Ave) ADTC

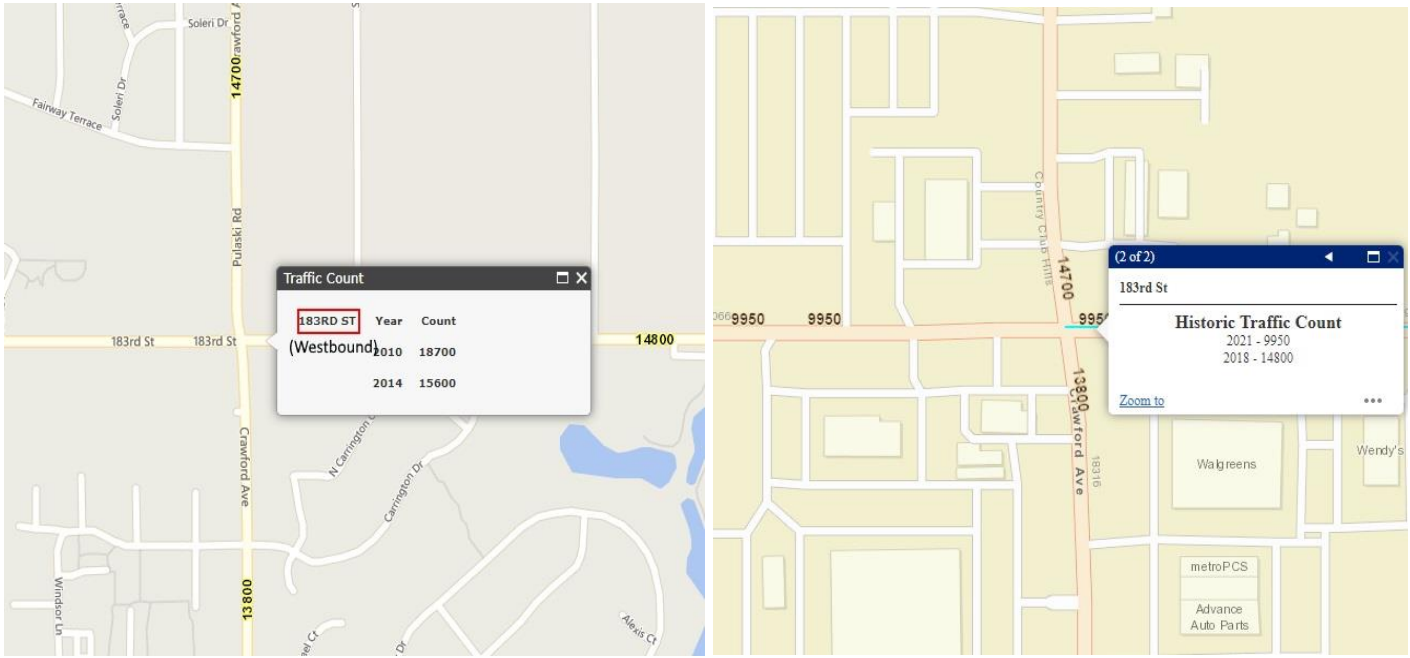
- Northbound: 12,700
- Southbound: 17,100



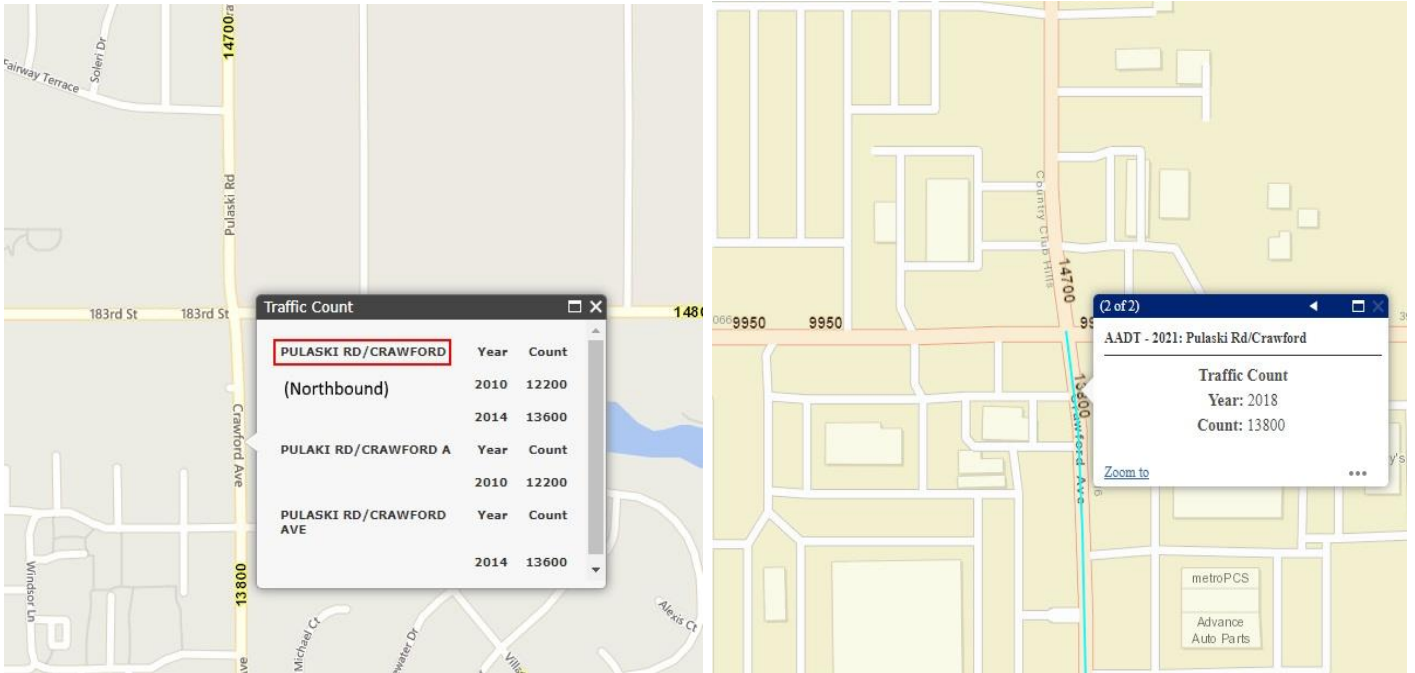
Eastbound ADTC



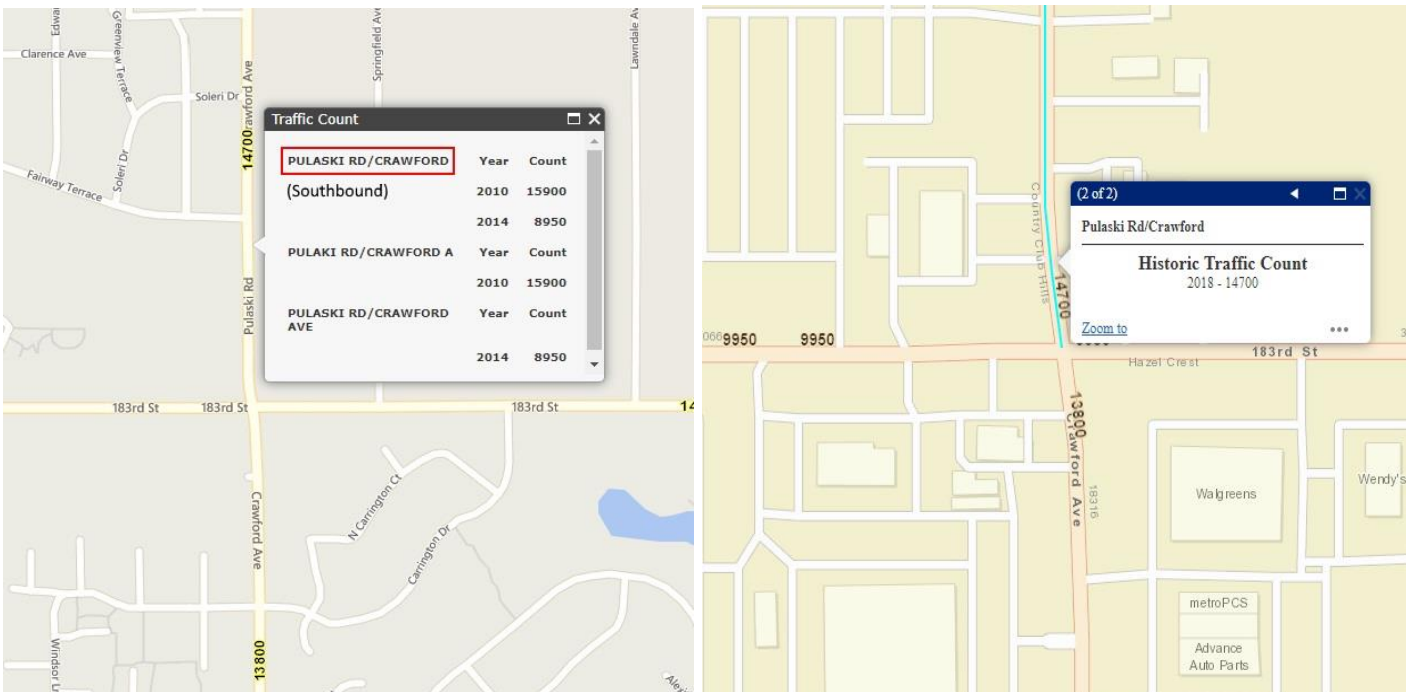
Westbound ADTC



Northbound ADTC



Southbound ADTC





4. Summary of Adjudication

The summary of tickets contested “in person” and “by mail” for the **Southbound** approach of **183rd St and Pulaski Rd** from 2018 to 2020.

	2018	2019	2020
In Person	97	159	31
By Mail	66	94	42



5. Report Summary and Recommendation

The **City of Country Club Hills** uses state-of-the-art digital cameras to execute its RLR Enforcement Safety Program. The citation and adjudication process administered by the **City of Country Club Hills** is conducted in a courteous, professional and timely manner and is in compliance with the RLR regulations laid out by the Illinois Department of Transportation District 1 Bureau of Traffic Operations.

From 2008-2009, prior to RLR camera installation, the combined average of ADTC was 62,800. From 2011-2020, post RLR camera installation, the combined average of ADTC was 58,580 – a reduction of 6.72%. (See tab 3)

From 2007-2008, prior to RLR camera installation, there were 39 total crashes; this averages out to 13 crashes a year. From 2011-2020, post RLR camera installation, there were 91 total crashes; this averages out to 9.1 crashes per year - a 30% reduction of overall crashes in direct comparison with the time period aforementioned. (See tab 2)

Following the installation of the RLR camera, total crashes have gone down 30% with a reduction of 6.72% in the combined average of ADTC.

After analyzing all of the available data, we believe that the RLR camera currently in operation at the intersection of **183rd St and Pulaski Rd** in the **City of Country Club Hills** is making a contribution toward improving traffic safety.

Because enhanced traffic safety is the principal aim of RLR camera enforcement programs, RLRC systems should remain at this intersection as an integral part of a traffic system process that incorporates public education, enforcement and engineering.